

MIDJ



Tabouret **Less H65-H75 M LG**

design Roberto Paoli, 2024

Tabouret Less avec structure en métal et assise en bois.

Disponible en hauteur H65 et H75.

Couleurs et matériaux

Revêtement



Métal orange papaya



Métal bleu ciel



Metal blanc



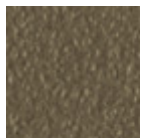
Métal bleu ocean



Métal bronze



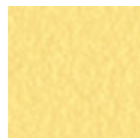
Metal corde



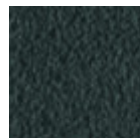
Métal fango



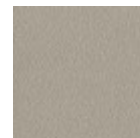
Métal jaune doré



Métal jaune pastel



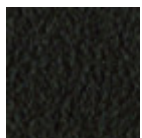
Métal graphite



Métal gris cendre



Métal gris claire



Métal marron



Metal noir



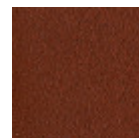
Métal ocre



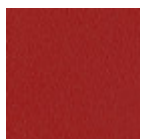
Métal rose poudre



Métal rosso



Métal rouge bulgare



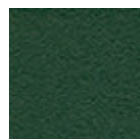
Métal rouge cerise



Métal vert pin



Métal vert sauge



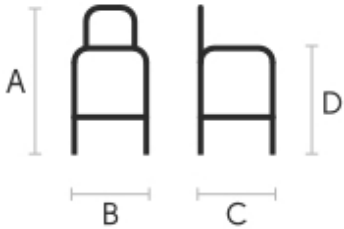
Metal vert foncé

Dossier



Bois teinte finition naturel

Dimensions



	A (cm) (inch)	B (cm) (inch)	C (cm) (inch)
Less H65 M	67	41	41
TS (cm) (inch)	26.4	16.1	16.1
Less H75 M	77	41	41
TS (cm) (inch)	30.3	16.1	16.1

Données volumétriques

Poids 7 Kg
Volume 0.12 mc
Colis 1

Certifications matériaux

Metal vert foncé

The technologies used in the previous phase of powder coating play a fundamental role in the final result of the processing. They are in fact essential to increase adherence paint on the metal surface and then guarantee its duration over time. The metal frames, following a total cleaning of the surface, pass through chemical conversion processes, creating a compact base that allows for better adhesion of the subsequent treatment. In the last phase the object subjected to the powder coating process is placed in a polymerization oven, going to form an adherent and extremely tight layer durable. This particular paint job is ideal for outdoor use.

To clean the surface, use a damp microfiber cloth with neutral soap or specific metal cleaning products. Avoid hitting or rubbing the surface with sharp objects. Do not use scourers or other abrasive materials, since they would inevitably scratch the surface. Do not leave rusty iron objects on the surface for too long.

These surface treatments are not suitable for outdoor use, but they guarantee excellent resistance to frequent use, dirt and dust.